



RADIUS Server Guide

/ ForgeRock Access Management 7.0.2

Latest update: 7.0.2

ForgeRock AS.
201 Mission St., Suite 2900
San Francisco, CA 94105, USA
+1 415-599-1100 (US)
www.forgerock.com

Copyright © 2016-2021 ForgeRock AS.

Abstract

Guide to configuring and using ForgeRock® Access Management (AM) as a RADIUS Server. ForgeRock Access Management provides intelligent authentication, authorization, federation, and single sign-on functionality.



This work is licensed under the Creative Commons Attribution-NonCommercial-NoDerivs 3.0 Unported License.

To view a copy of this license, visit <https://creativecommons.org/licenses/by-nc-nd/3.0/> or send a letter to Creative Commons, 444 Castro Street, Suite 900, Mountain View, California, 94041, USA.

ForgeRock® and ForgeRock Identity Platform™ are trademarks of ForgeRock Inc. or its subsidiaries in the U.S. and in other countries. Trademarks are the property of their respective owners.

UNLESS OTHERWISE MUTUALLY AGREED BY THE PARTIES IN WRITING, LICENSOR OFFERS THE WORK AS-IS AND MAKES NO REPRESENTATIONS OR WARRANTIES OF ANY KIND CONCERNING THE WORK, EXPRESS, IMPLIED, STATUTORY OR OTHERWISE, INCLUDING, WITHOUT LIMITATION, WARRANTIES OF TITLE, MERCHANTABILITY, FITNESS FOR A PARTICULAR PURPOSE, NON-INFRINGEMENT, OR THE ABSENCE OF LATENT OR OTHER DEFECTS, ACCURACY, OR THE PRESENCE OF ABSENCE OF ERRORS, WHETHER OR NOT DISCOVERABLE. SOME JURISDICTIONS DO NOT ALLOW THE EXCLUSION OF IMPLIED WARRANTIES, SO SUCH EXCLUSION MAY NOT APPLY TO YOU.

EXCEPT TO THE EXTENT REQUIRED BY APPLICABLE LAW, IN NO EVENT WILL LICENSOR BE LIABLE TO YOU ON ANY LEGAL THEORY FOR ANY SPECIAL, INCIDENTAL, CONSEQUENTIAL, PUNITIVE OR EXEMPLARY DAMAGES ARISING OUT OF THIS LICENSE OR THE USE OF THE WORK, EVEN IF LICENSOR HAS BEEN ADVISED OF THE POSSIBILITY OF SUCH DAMAGES.

DejaVu Fonts

Bitstream Vera Fonts Copyright

Copyright (c) 2003 by Bitstream, Inc. All Rights Reserved. Bitstream Vera is a trademark of Bitstream, Inc.

Permission is hereby granted, free of charge, to any person obtaining a copy of the fonts accompanying this license ("Fonts") and associated documentation files (the "Font Software"), to reproduce and distribute the Font Software, including without limitation the rights to use, copy, merge, publish, distribute, and/or sell copies of the Font Software, and to permit persons to whom the Font Software is furnished to do so, subject to the following conditions:

The above copyright and trademark notices and this permission notice shall be included in all copies of one or more of the Font Software typefaces.

The Font Software may be modified, altered, or added to, and in particular the designs of glyphs or characters in the Fonts may be modified and additional glyphs or characters may be added to the Fonts, only if the fonts are renamed to names not containing either the words "Bitstream" or the word "Vera".

This License becomes null and void to the extent applicable to Fonts or Font Software that has been modified and is distributed under the "Bitstream Vera" names.

The Font Software may be sold as part of a larger software package but no copy of one or more of the Font Software typefaces may be sold by itself.

THE FONT SOFTWARE IS PROVIDED "AS IS", WITHOUT WARRANTY OF ANY KIND, EXPRESS OR IMPLIED, INCLUDING BUT NOT LIMITED TO ANY WARRANTIES OF MERCHANTABILITY, FITNESS FOR A PARTICULAR PURPOSE AND NON-INFRINGEMENT OF COPYRIGHT, PATENT, TRADEMARK, OR OTHER RIGHT. IN NO EVENT SHALL BITSTREAM OR THE GNOME FOUNDATION BE LIABLE FOR ANY CLAIM, DAMAGES OR OTHER LIABILITY, INCLUDING ANY GENERAL, SPECIAL, INDIRECT, INCIDENTAL, OR CONSEQUENTIAL DAMAGES, WHETHER IN AN ACTION OF CONTRACT, TORT OR OTHERWISE, ARISING FROM, OUT OF THE USE OR INABILITY TO USE THE FONT SOFTWARE OR FROM OTHER DEALINGS IN THE FONT SOFTWARE.

Except as contained in this notice, the names of Gnome, the Gnome Foundation, and Bitstream Inc., shall not be used in advertising or otherwise to promote the sale, use or other dealings in this Font Software without prior written authorization from the Gnome Foundation or Bitstream Inc., respectively. For further information, contact: fonts at gnome dot org.

Arev Fonts Copyright

Copyright (c) 2006 by Tavmjong Bah. All Rights Reserved.

Permission is hereby granted, free of charge, to any person obtaining a copy of the fonts accompanying this license ("Fonts") and associated documentation files (the "Font Software"), to reproduce and distribute the modifications to the Bitstream Vera Font Software, including without limitation the rights to use, copy, merge, publish, distribute, and/or sell copies of the Font Software, and to permit persons to whom the Font Software is furnished to do so, subject to the following conditions:

The above copyright and trademark notices and this permission notice shall be included in all copies of one or more of the Font Software typefaces.

The Font Software may be modified, altered, or added to, and in particular the designs of glyphs or characters in the Fonts may be modified and additional glyphs or characters may be added to the Fonts, only if the fonts are renamed to names not containing either the words "Tavmjong Bah" or the word "Arev".

This License becomes null and void to the extent applicable to Fonts or Font Software that has been modified and is distributed under the "Tavmjong Bah Arev" names.

The Font Software may be sold as part of a larger software package but no copy of one or more of the Font Software typefaces may be sold by itself.

THE FONT SOFTWARE IS PROVIDED "AS IS", WITHOUT WARRANTY OF ANY KIND, EXPRESS OR IMPLIED, INCLUDING BUT NOT LIMITED TO ANY WARRANTIES OF MERCHANTABILITY, FITNESS FOR A PARTICULAR PURPOSE AND NON-INFRINGEMENT OF COPYRIGHT, PATENT, TRADEMARK, OR OTHER RIGHT. IN NO EVENT SHALL TAVMJONG BAH BE LIABLE FOR ANY CLAIM, DAMAGES OR OTHER LIABILITY, INCLUDING ANY GENERAL, SPECIAL, INDIRECT, INCIDENTAL, OR CONSEQUENTIAL DAMAGES, WHETHER IN AN ACTION OF CONTRACT, TORT OR OTHERWISE, ARISING FROM, OUT OF THE USE OR INABILITY TO USE THE FONT SOFTWARE OR FROM OTHER DEALINGS IN THE FONT SOFTWARE.

Except as contained in this notice, the name of Tavmjong Bah shall not be used in advertising or otherwise to promote the sale, use or other dealings in this Font Software without prior written authorization from Tavmjong Bah. For further information, contact: tavmjong @ free . fr.

FontAwesome Copyright

Copyright (c) 2017 by Dave Gandy, <https://fontawesome.com/>.

This Font Software is licensed under the SIL Open Font License, Version 1.1. See <https://opensource.org/licenses/OFL-1.1>.





Table of Contents

- Overview iv
- 1. Introducing RADIUS 1
- 2. The RADIUS Server Service 3
- 3. Troubleshooting the RADIUS Server Service 6
 - Solutions to Common RADIUS Server Service Issues 6
- 4. RADIUS Server Limitations 11
- 5. The RADIUS Authentication Module 13
- Glossary 14

Overview

This guide shows you how to configure, maintain, and troubleshoot ForgeRock Access Management when acting as a Remote Authentication Dial-In User Service (RADIUS) server.

Quick Start

 About RADIUS Learn about the RADIUS protocol and how AM supports it.	 The RADIUS Server Service Discover how AM acts as a RADIUS server, and how to configure it to accept authentication requests from RADIUS clients.
 Troubleshooting the RADIUS Server Service Read about configuring AM to troubleshoot the RADIUS Server service.	 The RADIUS Authentication Module Read about how AM can act as a RADIUS client by delegating authentication to an external RADIUS server.

About ForgeRock Identity Platform™ Software

ForgeRock Identity Platform™ serves as the basis for our simple and comprehensive Identity and Access Management solution. We help our customers deepen their relationships with their customers, and improve the productivity and connectivity of their employees and partners. For more information about ForgeRock and about the platform, see <https://www.forgerock.com>.

Chapter 1

Introducing RADIUS

RADIUS is a lightweight, datagram-based protocol formally specified in RFC 2865 that is supported by many devices and servers for external authentication. VPN concentrators, routers, switches, wireless access points, and many other devices have native RADIUS support. Such devices are known as RADIUS clients. Using the RADIUS protocol, they converse with RADIUS servers to authenticate entities, such as users attempting to access their resources.

The RADIUS protocol itself is quite simple. There are four packet types:

- **Access-Request** packets are sent from a client to a server to begin a new authentication conversation, or to respond to a previous response in an existing conversation and provide requested information.
- **Access-Accept** packets are sent from a server to a client to indicate a successful authentication.
- **Access-Reject** packets are sent from a server to a client to indicate a failed authentication.
- **Access-Challenge** packets are sent from a server to a client to solicit more information from the entity being authenticated.

Each packet type defines:

- A set of fields that must be included
- Other fields that can be included to convey:
 - Additional requirements
 - Information about the context of the conversation
 - Attributes of the entity after successful authentication

For example, an **Access-Request** packet should always contain user name and password fields. It can contain other fields that provide information about the client making the request, such as inclusion of the optional **State** field indicates that a packet is part of an authentication conversation already in progress. Its absence indicates the start of a new conversation.

An authentication conversation always begins with an **Access-Request** packet that does not have a **State** field. If the RADIUS server only requires the user name and password for authentication, then conversations will complete after the server sends an **Access-Accept** or **Access-Reject** packet, depending on whether the authentication credentials were valid.

If more information is required by the server, such as an SMS-relayed one-time password sent to the user's phone, the additional requirement can be solicited using an **Access-Challenge** response to the client, followed by an **Access-Request** packet that has a **State** field that associates it with the existing

conversation. The conversation completes with an **Access-Accept** or **Access-Reject** packet depending on whether the one-time password supplied in the second request matches the password sent to the user's phone.

This conversational style in which the server accepts, rejects, or solicits more information makes RADIUS an excellent match for leveraging AM's authentication infrastructure. AM performs authentication using chains of authentication modules found in realms.

These modules identify authentication requirements that are conveyed to clients wishing to authenticate. The modules then accept values submitted by the user for verification. The mechanism for modules to convey these requirements to AM is through a finite set of constructs known as callbacks. By leveraging AM's flexible and extensible authentication mechanism, organizations can craft an authentication experience suitable for their needs, while using the same mechanisms for both HTTP and RADIUS authentication.

Two AM features support the RADIUS protocol: "*The RADIUS Server Service*" and "*The RADIUS Authentication Module*".

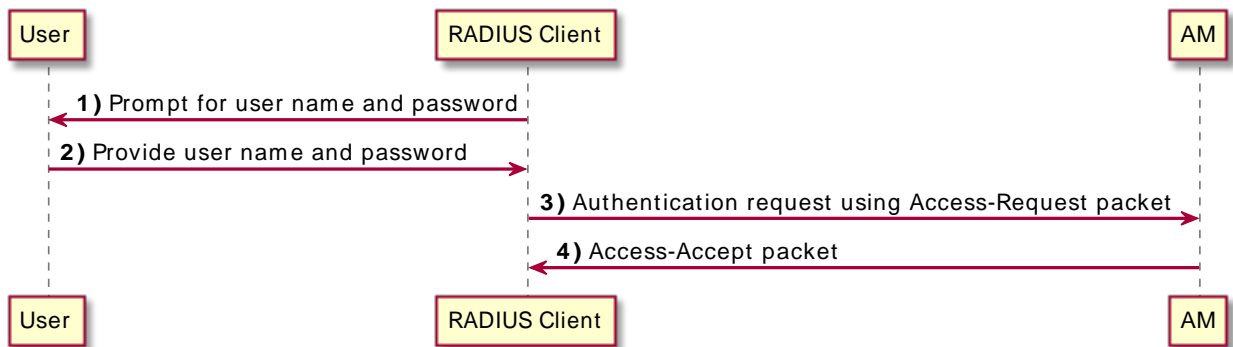
Chapter 2

The RADIUS Server Service

The RADIUS Server service provides a RADIUS server within AM. The server authenticates RADIUS clients that are external to AM. The server is backed by AM's authentication chains and modules, thereby providing the possibility of multi-factor authentication in addition to simple user name and password authentication.

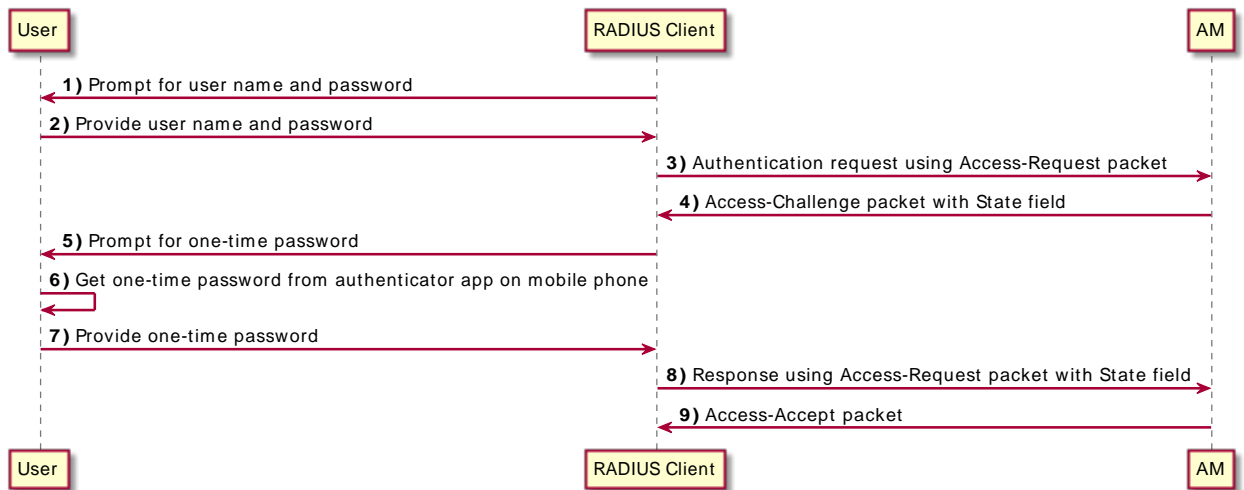
The following example shows the flow of a successful simple user name and password authentication attempt from a RADIUS client:

RADIUS Server Service: Successful Simple Authentication Flow



The following example shows the flow of a successful multi-factor authentication scenario in which the RADIUS Server service is backed by an authentication chain that includes the LDAP and the ForgeRock Authenticator (OATH) authentication modules. First, the LDAP authentication module requires the user to provide a user name and password. Then, the ForgeRock Authenticator (OATH) module requires the user to enter a one-time password obtained from the authenticator app on a mobile phone:

RADIUS Server Service: Successful Multi-Factor Authentication Flow



The AM RADIUS server is disabled by default. To enable it, perform the following steps:

To Enable and Configure the RADIUS Server

1. Login to the AM console as the top-level administrative user, such as `amAdmin`.
2. Navigate to **Configure > Global Services**, and then click **RADIUS Server**.
3. Under **Secondary Configuration Instance**, click **New**.

AM uses secondary configuration instances in the RADIUS Server service to encapsulate RADIUS clients. You must configure one secondary configuration instance, also known as a subconfiguration, for each client that will connect to the RADIUS Server.

4. Configure attributes for the subconfiguration. See "**RADIUS Server**" in the *Reference* for information about configuring the subconfiguration attributes.
5. Click **Add** to add the configuration for the RADIUS client to the overall RADIUS Server service's configuration.
6. If you have multiple RADIUS clients that will connect to the AM RADIUS server, add a subconfiguration for each client. It is not necessary to configure all your RADIUS clients when you configure the RADIUS Server service initially—you can add and remove clients over time as you need them.
7. Configure global attributes of the RADIUS Server service. At a minimum, set the **Enabled** field to **YES** to start the RADIUS server immediately after you save the RADIUS Server service configuration.

See "RADIUS Server" in the *Reference* for information about configuring the RADIUS Server service's global attributes.

8. On the main configuration page for the RADIUS Server service, click Save.

The RADIUS server starts immediately after you save the configuration if the Enabled field has the value **YES**. Any time you make changes to the RADIUS Server service configuration, they take effect as soon as you save the changes.

Chapter 3

Troubleshooting the RADIUS Server Service

If you need to troubleshoot the RADIUS Server service, enable message-level debugging. For information about enabling debug logging, see "*Debug Logging*" in the *Maintenance Guide*.

With message-level debug logging enabled, AM writes messages to the **Radius** debug log file when notable events occur, including the following:

- RADIUS server startup
- Changes to the RADIUS server configuration
- Successful and unsuccessful client connections
- Various error events

You can also configure the RADIUS Server service to log the packets sent between RADIUS clients and AM. To enable packet logging, use the Log Packet Contents for this Client property when configuring RADIUS clients in the RADIUS Server service.

Solutions to Common RADIUS Server Service Issues

This section offers solutions to issues that you might encounter when configuring communication between RADIUS clients and the RADIUS Server service. The solutions assume that you have enabled message-level debugging for the RADIUS Server service in AM and have access to the debug logs.

Client Cannot Connect

When a RADIUS client connects to AM's RADIUS server and hangs without receiving a response, the problem could be one of four possible issues:

- The AM RADIUS Server service is not enabled.

An entry similar to the following in the **Radius** debug log indicates that AM's RADIUS Server was started:

```
amRadiusServer:10/12/2015 12:00:14:814 PM PDT: Thread[RADIUS-1812-Listener,5,main]:  
TransactionId[27350419-8c21-429e-b580-35abf64604cf]  
RADIUS Listener is Active.  
Port          : 1812  
Threads Core   : 2  
Threads Max    : 10  
Thread Keep-alive : 10 sec  
Request Queue  : 10
```

If no such entry exists in the debug log, re-examine the configuration for the RADIUS Server service and correct the problem.

- The client is not defined.

An entry similar to the following in the **RADIUS** debug log indicates the inability of a client to connect:

```
amRadiusServer:10/12/2015 04:05:53:681 PM PDT: Thread[RADIUS-1812-Listener,5,main]:  
TransactionId[270084d5-b7d0-42e4-8709-eeaeaf435aff]  
WARNING: No Defined RADIUS Client matches IP address /192.168.10.10. Dropping request.
```

To fix the problem, correct the client configuration in the RADIUS Server service.

- The handler class for the client is incorrect.

An entry similar to the following in the **RADIUS** debug log indicates an incorrect handler class:

```
ERROR: Configuration setting handlerClass in RADIUS Client configuration named  
'TestClient' is invalid. Requests from this client will be ignored.
```

To fix the problem, correct the client configuration in the RADIUS Server service.

- Traffic is not arriving at the AM server.

No specific debug log entries appear for this problem.

This is likely a network communication problem. Investigate the route for traffic between the RADIUS client and the AM RADIUS server to see where communication is lost.

Authentication Always Fails

When authentication always fails, the probable cause is one of the following three issues:

- The client secret configured for the client in the RADIUS Server service is incorrect.

In an **Access-Request** packet, the shared secret is used along with the random value sent in the request authenticator field to encrypt the password field value that is passed across the wire. If the client and server's shared secrets are not identical, the password expected by the server will not match the password sent by the client, resulting in authentication always failing. The

user's password is always incorrect in such a scenario and there is no way for the server to differentiate between the client secret being incorrect and the password sent from the client being incorrect. The log file indicates that AM has sent an **Access-Reject** packet to the client, similar to the action that would be taken if the shared secret matched on the client and server and the user entered an invalid password:

```
amRadiusServer:10/12/2015 04:27:55:785 PM PDT: Thread[RADIUS-1812-Listener,5,main]:  
TransactionId[270084d5-b7d0-42e4-8709-eeaeaf435aff]  
finalPacketType sent in response to auth request: 'ACCESS_REJECT'
```

Since the shared secret is specific to each client, such messages might appear for one RADIUS client, while other clients can authenticate successfully.

To fix this problem, correct the configuration for your client in the RADIUS Server service.

- The realm configured for the client in the RADIUS Server service is incorrect.

An entry similar to the following in the **Radius** debug log indicates an invalid realm in the RADIUS Server service configuration:

```
ERROR: Unable to start login process. Denying Access.  
com.sun.identity.authentication.spi.AuthLoginException: Domain is invalid|  
invalid_domain.jsp
```

If the realm is missing from the configuration, an error similar to the following appears:

```
ERROR: Unable to initialize declared handler class  
'org.forgerock.openam.radius.server.spi.handlers.OpenAMAuthHandler' for RADIUS  
client ''. Rejecting access.  
java.lang.IllegalStateException: Configuration property 'realm' not found in  
handler configuration. It must be added to the Configuration Properties for this  
class in the Radius Client's configuration.
```

To fix this problem, correct the client configuration in the RADIUS Server service.

- The authentication chain configured for the client in the RADIUS Server service is incorrect.

An entry similar to the following in the **Radius** debug log indicates an invalid authentication chain in the RADIUS Server service configuration:

```
amRadiusServer:10/12/2015 05:32:21:771 PM PDT: Thread[pool-5-thread-2,5,main]:  
TransactionId[378a41cf-0581-4b62-a92f-be2b008ab4d3] ERROR: Unable to start login  
process. Denying Access.
```

If the chain is missing from the configuration, an error similar to the following appears:

```
ERROR: Unable to initialize declared handler class
'org.forgerock.openam.radius.server.spi.handlers.OpenAMAuthHandler' for RADIUS
client ''. Rejecting access.
java.lang.IllegalStateException: Configuration property 'chain' not found in
handler configuration. It must be added to the Configuration Properties for this
class in the Radius Client's configuration.
```

To fix this problem, correct the client configuration in the RADIUS Server service.

Configuration Is Correct but Authentication Fails

In this case, you might have a client-specific problem. AM provides a tool that you can use to eliminate AM and its configuration as the cause of the problem. You can declare an alternate handler class implementation in the RADIUS Server service configuration. Two test handlers are available for troubleshooting purposes:

- The `org.forgerock.openam.radius.server.spi.handlers.AcceptAllHandler` handler always returns an `Access-Accept` packet, indicating successful authentication for all requests.
- The `org.forgerock.openam.radius.server.spi.handlers.RejectAllHandler` handler always returns an `Access-Reject` packet, indicating failed authentication for all requests.

In a case where you believe that configuration is correct but authentication always fails, you could specify the `org.forgerock.openam.radius.server.spi.handlers.AcceptAllHandler` handler class in the RADIUS Server service configuration for your client. With packet logging enabled, all requests received from the client should log packet contents traffic similar to the following even if the password is incorrect:

```
WARNING:
Packet from TestClient:
  ACCESS_REQUEST [1]
    - USER_NAME : demo
    - USER_PASSWORD : *****
    - NAS_IP_ADDRESS : /127.0.0.1
    - NAS_PORT : 0
```

This is followed by:

```
WARNING:
Packet to TestClient:
  ACCESS_ACCEPT [1]
```

If the client still indicates that authentication has failed, refer to the documentation for the client to determine why the `Access-Accept` response is rejected. Most likely, the client expects specific fields in the `Access-Accept` response that are not provided by AM. There is currently no facility in AM to return fields in `Access-Accept` responses.

Authentication Always Succeeds, Even With a Bad Password

This would be a very unusual situation, probably due to the `org.forgerock.openam.radius.server.spi.handlers.AcceptAllHandler` handler being left in place after troubleshooting an error scenario in which authentication always succeeds.

To resolve the problem, verify that the correct handler class is specified in the RADIUS Server service configuration for the client. If it is not specified, review the authentication modules in the chain that authenticates users and determine whether one of the modules might be accepting all authentication requests. This situation could also occur because of incorrectly-specified module criteria in the chain's definition.

Chapter 4

RADIUS Server Limitations

Deploying AM's RADIUS server lets an organization consolidate RADIUS and HTTP authentication into a single solution, facilitating reuse of existing authentication mechanisms between both types of clients. However, there are several limitations:

- Because RADIUS authentication attempts always start with a user name and password transmitted in an `Access-Request` packet, the first module in an authentication chain used for RADIUS clients must accept a user name and a password.
- By default, AM caches up to 5,000 RADIUS clients concurrently.

If necessary, you can change the maximum number of RADIUS clients that can be cached concurrently on an AM server by configuring the `org.forgerock.openam.radius.server.context.cache.size` advanced server property.

See "Configuring Servers" in the *Reference* for information about how to configure advanced server properties.

- Some AM callback types are not applicable to RADIUS clients. For example, a `RedirectCallback` directs HTTP clients, such as browsers, to HTTP resources to be used for some aspect of authentication. Redirects make no sense to RADIUS clients and cannot be consumed in any meaningful way.

A `ConfirmationCallback` also presents challenges for RADIUS clients.

As a result, some AM authentication modules cannot be used with RADIUS clients. Before attempting to use an authentication module with RADIUS clients, review the module's callbacks to determine whether the module will support RADIUS clients. You can use the REST API to determine the callbacks for an authentication module as described in "*Authenticating (REST)*" in the *Authentication and Single Sign-On Guide*.

- Some client mechanisms leveraged by authentication modules might not be applicable to RADIUS clients. For example, suppose a customized SMS one-time password module sends a one-time password over an SMS service, and then provides a `ChoiceCallback` that lets the user set a cookie in their browser that expires after 30 days. Such a module might first determine whether the cookie was available, still valid, and applicable to the current user before reissuing a new one-time password and soliciting the value from the user.

RADIUS clients are unable to process HTTP cookies. Although RADIUS clients can support a `ChoiceCallback`, the customized feature described in the previous paragraph would not function correctly for RADIUS clients, and therefore should not be deployed with RADIUS clients. As a

result, some callback sets within an authentication module will differ depending on the type of client being authenticated.

- The RADIUS Server service logs *only* to the ForgeRock common audit logger introduced in OpenAM 13. It does *not* log to the classic audit logs that were available prior to OpenAM 13.

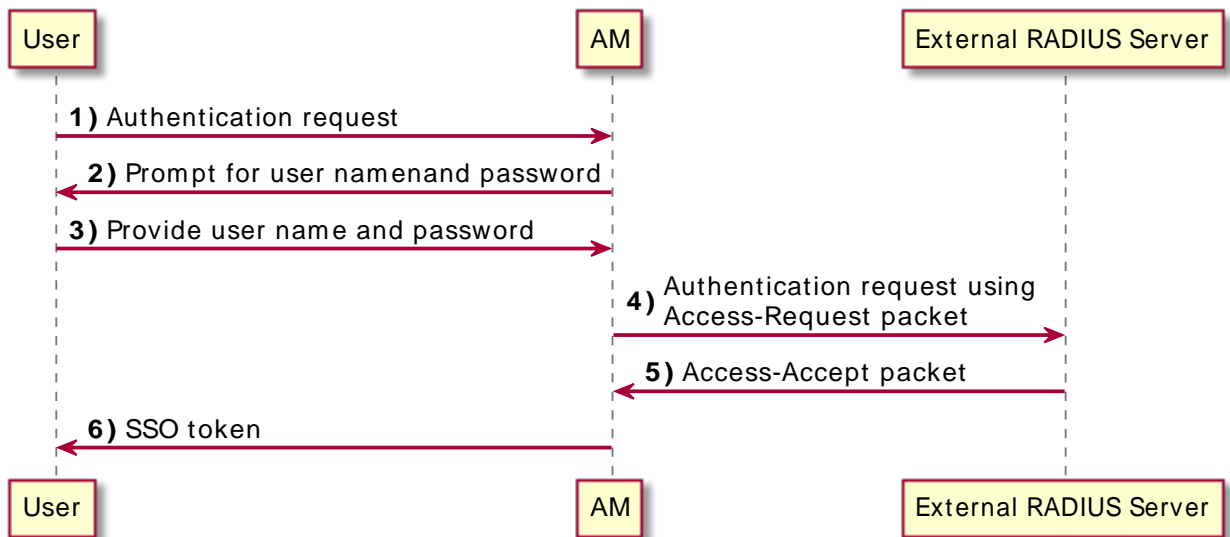
When building custom authentication modules, consider their suitability for handling the types of clients that might use them, and make adjustments to callbacks as needed.

Chapter 5

The RADIUS Authentication Module

The RADIUS authentication module enables AM to act as a RADIUS client, delegating authentication to an external RADIUS server:

RADIUS Authentication Module: Successful Authentication Flow



Use the RADIUS authentication module when you want AM to pass user names and passwords through to an external RADIUS server, so that it can authenticate the users.

For information about configuring the RADIUS authentication module, see "RADIUS Authentication Module Properties" in the *Authentication and Single Sign-On Guide*.

Glossary

Access control	Control to grant or to deny access to a resource.
Account lockout	The act of making an account temporarily or permanently inactive after successive authentication failures.
Actions	Defined as part of policies, these verbs indicate what authorized identities can do to resources.
Advice	In the context of a policy decision denying access, a hint to the policy enforcement point about remedial action to take that could result in a decision allowing access.
Agent administrator	User having privileges only to read and write agent profile configuration information, typically created to delegate agent profile creation to the user installing a web or Java agent.
Agent authenticator	Entity with read-only access to multiple agent profiles defined in the same realm; allows an agent to read web service profiles.
Application	<p>In general terms, a service exposing protected resources.</p> <p>In the context of AM policies, the application is a template that constrains the policies that govern access to protected resources. An application can have zero or more policies.</p>
Application type	<p>Application types act as templates for creating policy applications.</p> <p>Application types define a preset list of actions and functional logic, such as policy lookup and resource comparator logic.</p>

	Application types also define the internal normalization, indexing logic, and comparator logic for applications.
Attribute-based access control (ABAC)	Access control that is based on attributes of a user, such as how old a user is or whether the user is a paying customer.
Authentication	The act of confirming the identity of a principal.
Authentication chaining	A series of authentication modules configured together which a principal must negotiate as configured in order to authenticate successfully.
Authentication level	Positive integer associated with an authentication module, usually used to require success with more stringent authentication measures when requesting resources requiring special protection.
Authentication module	AM authentication unit that handles one way of obtaining and verifying credentials.
Authorization	The act of determining whether to grant or to deny a principal access to a resource.
Authorization Server	In OAuth 2.0, issues access tokens to the client after authenticating a resource owner and confirming that the owner authorizes the client to access the protected resource. AM can play this role in the OAuth 2.0 authorization framework.
Auto-federation	Arrangement to federate a principal's identity automatically based on a common attribute value shared across the principal's profiles at different providers.
Bulk federation	Batch job permanently federating user profiles between a service provider and an identity provider based on a list of matched user identifiers that exist on both providers.
Circle of trust	Group of providers, including at least one identity provider, who have agreed to trust each other to participate in a SAML v2.0 provider federation.
Client	In OAuth 2.0, requests protected web resources on behalf of the resource owner given the owner's authorization. AM can play this role in the OAuth 2.0 authorization framework.
Client-based OAuth 2.0 tokens	After a successful OAuth 2.0 grant flow, AM returns a token to the client. This differs from CTS-based OAuth 2.0 tokens, where AM returns a <i>reference</i> to token to the client.
Client-based sessions	AM sessions for which AM returns session state to the client after each request, and require it to be passed in with the subsequent

request. For browser-based clients, AM sets a cookie in the browser that contains the session information.

For browser-based clients, AM sets a cookie in the browser that contains the session state. When the browser transmits the cookie back to AM, AM decodes the session state from the cookie.

Conditions

Defined as part of policies, these determine the circumstances under which which a policy applies.

Environmental conditions reflect circumstances like the client IP address, time of day, how the subject authenticated, or the authentication level achieved.

Subject conditions reflect characteristics of the subject like whether the subject authenticated, the identity of the subject, or claims in the subject's JWT.

Configuration datastore

LDAP directory service holding AM configuration data.

Cross-domain single sign-on (CDSSO)

AM capability allowing single sign-on across different DNS domains.

CTS-based OAuth 2.0 tokens

After a successful OAuth 2.0 grant flow, AM returns a *reference* to the token to the client, rather than the token itself. This differs from [client-based OAuth 2.0 tokens](#), where AM returns the entire token to the client.

CTS-based sessions

AM [sessions](#) that reside in the Core Token Service's token store. CTS-based sessions might also be cached in memory on one or more AM servers. AM tracks these sessions in order to handle events like logout and timeout, to permit session constraints, and to notify applications involved in SSO when a session ends.

Delegation

Granting users administrative privileges with AM.

Entitlement

Decision that defines which resource names can and cannot be accessed for a given identity in the context of a particular application, which actions are allowed and which are denied, and any related advice and attributes.

Extended metadata

Federation configuration information specific to AM.

Extensible Access Control Markup Language (XACML)

Standard, XML-based access control policy language, including a processing model for making authorization decisions based on policies.

Federation

Standardized means for aggregating identities, sharing authentication and authorization data information between trusted providers, and

	allowing principals to access services across different providers without authenticating repeatedly.
Fedlet	Service provider application capable of participating in a circle of trust and allowing federation without installing all of AM on the service provider side; AM lets you create Java Fedlets.
Hot swappable	Refers to configuration properties for which changes can take effect without restarting the container where AM runs.
Identity	Set of data that uniquely describes a person or a thing such as a device or an application.
Identity federation	Linking of a principal's identity across multiple providers.
Identity provider (IDP)	Entity that produces assertions about a principal (such as how and when a principal authenticated, or that the principal's profile has a specified attribute value).
Identity repository	Data store holding user profiles and group information; different identity repositories can be defined for different realms.
Java agent	Java web application installed in a web container that acts as a policy enforcement point, filtering requests to other applications in the container with policies based on application resource URLs.
Metadata	Federation configuration information for a provider.
Policy	Set of rules that define who is granted access to a protected resource when, how, and under what conditions.
Policy agent	Java, web, or custom agent that intercepts requests for resources, directs principals to AM for authentication, and enforces policy decisions from AM.
Policy Administration Point (PAP)	Entity that manages and stores policy definitions.
Policy Decision Point (PDP)	Entity that evaluates access rights and then issues authorization decisions.
Policy Enforcement Point (PEP)	Entity that intercepts a request for a resource and then enforces policy decisions from a PDP.
Policy Information Point (PIP)	Entity that provides extra information, such as user profile attributes that a PDP needs in order to make a decision.
Principal	Represents an entity that has been authenticated (such as a user, a device, or an application), and thus is distinguished from other entities.

	When a Subject successfully authenticates, AM associates the Subject with the Principal .
Privilege	In the context of delegated administration, a set of administrative tasks that can be performed by specified identities in a given realm.
Provider federation	Agreement among providers to participate in a circle of trust.
Realm	AM unit for organizing configuration and identity information. Realms can be used for example when different parts of an organization have different applications and identity stores, and when different organizations use the same AM deployment. Administrators can delegate realm administration. The administrator assigns administrative privileges to users, allowing them to perform administrative tasks within the realm.
Resource	Something a user can access over the network such as a web page. Defined as part of policies, these can include wildcards in order to match multiple actual resources.
Resource owner	In OAuth 2.0, entity who can authorize access to protected web resources, such as an end user.
Resource server	In OAuth 2.0, server hosting protected web resources, capable of handling access tokens to respond to requests for such resources.
Response attributes	Defined as part of policies, these allow AM to return additional information in the form of "attributes" with the response to a policy decision.
Role based access control (RBAC)	Access control that is based on whether a user has been granted a set of permissions (a role).
Security Assertion Markup Language (SAML)	Standard, XML-based language for exchanging authentication and authorization data between identity providers and service providers.
Service provider (SP)	Entity that consumes assertions about a principal (and provides a service that the principal is trying to access).
Authentication Session	The interval while the user or entity is authenticating to AM.
Session	The interval that starts after the user has authenticated and ends when the user logs out, or when their session is terminated. For browser-based clients, AM manages user sessions across one or more applications by setting a session cookie. See also CTS-based sessions and Client-based sessions.

Session high availability	Capability that lets any AM server in a clustered deployment access shared, persistent information about users' sessions from the CTS token store. The user does not need to log in again unless the entire deployment goes down.
Session token	Unique identifier issued by AM after successful authentication. For a CTS-based sessions , the session token is used to track a principal's session.
Single log out (SLO)	Capability allowing a principal to end a session once, thereby ending her session across multiple applications.
Single sign-on (SSO)	Capability allowing a principal to authenticate once and gain access to multiple applications without authenticating again.
Site	<p>Group of AM servers configured the same way, accessed through a load balancer layer. The load balancer handles failover to provide service-level availability.</p> <p>The load balancer can also be used to protect AM services.</p>
Standard metadata	Standard federation configuration information that you can share with other access management software.
Stateless Service	<p>Stateless services do not store any data locally to the service. When the service requires data to perform any action, it requests it from a data store. For example, a stateless authentication service stores session state for logged-in users in a database. This way, any server in the deployment can recover the session from the database and service requests for any user.</p> <p>All AM services are stateless unless otherwise specified. See also Client-based sessions and CTS-based sessions.</p>
Subject	<p>Entity that requests access to a resource</p> <p>When an identity successfully authenticates, AM associates the identity with the Principal that distinguishes it from other identities. An identity can be associated with multiple principals.</p>
Identity store	Data storage service holding principals' profiles; underlying storage can be an LDAP directory service or a custom IdRepo implementation.
Web Agent	Native library installed in a web server that acts as a policy enforcement point with policies based on web page URLs.